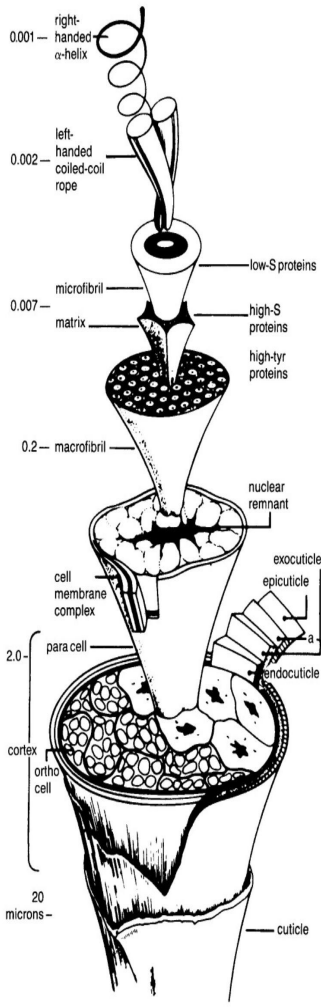


HIGGINS ENVIRONMENTALLY RESPONSIBLE INSULATION

'Real Wool' Insulation – A Natural Solution

STRUCTURE OF WOOL FIBRE

Wool has a complex physical and chemical structure.



Since the dawn of creation, wool has protected sheep from extreme climate conditions naturally and has been used as insulation in Europe since the early eighteenth century.

CSIRO research shows that wool performs better as an insulator because it is a natural fibre that breathes and traps air, giving higher thermal performance and resistance to heat flow over other insulators.

Wool also has an inherent natural ability to interact with the atmosphere, absorbing and desorbing moisture as the conditions dictate.

CSIRO trials comparing wool insulation with polyurethane foam of similar thermal resistance showed that on hot days, reduction in peak temperatures was up to 3 degrees higher for the wool insulation compared to polyurethane. Minimum temperatures at night were slightly higher for the wool insulation, indicating that wool has a better ability to minimise temperature fluctuation between day and night, according to CSIRO project manager Dr. Jeff Symons. "The release of moisture by the wool insulation results in cooling of the fibre mass" said Dr. Symons "So when the outside temperature increases and begins to heat the wool, it releases moisture which has a cooling effect on the fibre, this improves the ability of the fibre mass (the wool batts) to reduce the flow of heat from outside to inside the home".

Excellent thermal and acoustic qualities, plus the fact that wool is treated with natural salts and minerals to make it vermin proof and fire resistant means wool is possibly the safest most environmentally friendly insulation on the planet.

